



**Supplementary
Report of the
ABORTION SUPERVISORY COMMITTEE**

2011

*Presented to the House of Representatives pursuant to Section 39 of the Contraception, Sterilisation,
and Abortion Act 1977*

TABLE OF CONTENTS

Statistics

Induced Abortions, Rates and Ratios	3
Graph 1.1 - Number of Induced Abortions	3
Graph 1.2 - Abortion Ratio	4
Graph 1.3 - General Abortion Rate	4
Graph 1.4 - General Abortion Rate in Selected Countries.....	5
Hospital and Residence	6
Graph 2.1 - Number of Abortions by Hospital	6
Graph 2.2 - Number of Abortions by Residence of Woman	7
Table 2.3 - Induced Abortions by Residential Status of Woman	7
Age of Woman	8
Graph 3.1 - Number of Abortions by Age	8
Graph 3.2 - Number of Abortions by Age in Percentages	8
Graph 3.3 - Number of Abortions for Ages 11-14	9
Graph 3.4 - Number of Abortions for Ages 15-19	9
Previous Live Births	10
Table 4.1 - Induced Abortions by Age & Previous Live Births	10
Graph 4.2 - Number of Abortions by Previous Live Births	10
Previous Induced Abortions	11
Table 5.1 - Induced Abortions by Age & Previous Induced Abortions	11
Graph 5.2 - Number of Abortions by Previous Induced Abortions	11
Repeat Abortions	12
Tubal Ligation	12
Graph 5.3 - Tubal Ligation Procedures	12
Long Term Contraceptive Devices	12
Ethnic Group	14
Graph 6.1 - Number of Abortions by Ethnic Group	14
Graph 6.2 - Number of Abortions by Ethnic Group (Trend)	14
Graph 6.3 - Induced Abortion by Ethnicity Ratio.....	15
Duration of Pregnancy	16
Table 7.1 - Induced Abortion by Age & Duration of Pregnancy	16
Table 7.2 - Induced Abortion by Duration of Pregnancy	16
Table 7.3 - First Trimester Abortion by Duration of Pregnancy	17
Grounds for Abortion	18
Table 8.1 - Induced Abortion by Grounds for Abortion	18
Procedure	19
Table 9.1 - Induced Abortion by Procedure	19
Contraception	20
Table 10.1 - Induced Abortion by Contraception Used	20
Graph 10.2 - Percentage of Abortions by Contraception Used	20

Statistics

As advised in the initial Abortion Supervisory Committee Annual Report, abortion statistics were not available at that time due to damage sustained in the February 2011 earthquake in Christchurch. More than 3,000 abortion forms were trapped in Statistics New Zealand's Dollan House, unable to be processed.

Statistics New Zealand released the 2010 calendar year abortion statistics on 28 October 2011 once all forms were retrieved and processed. The Committee would like to express thanks to Statistics New Zealand for their hard work over this difficult period.

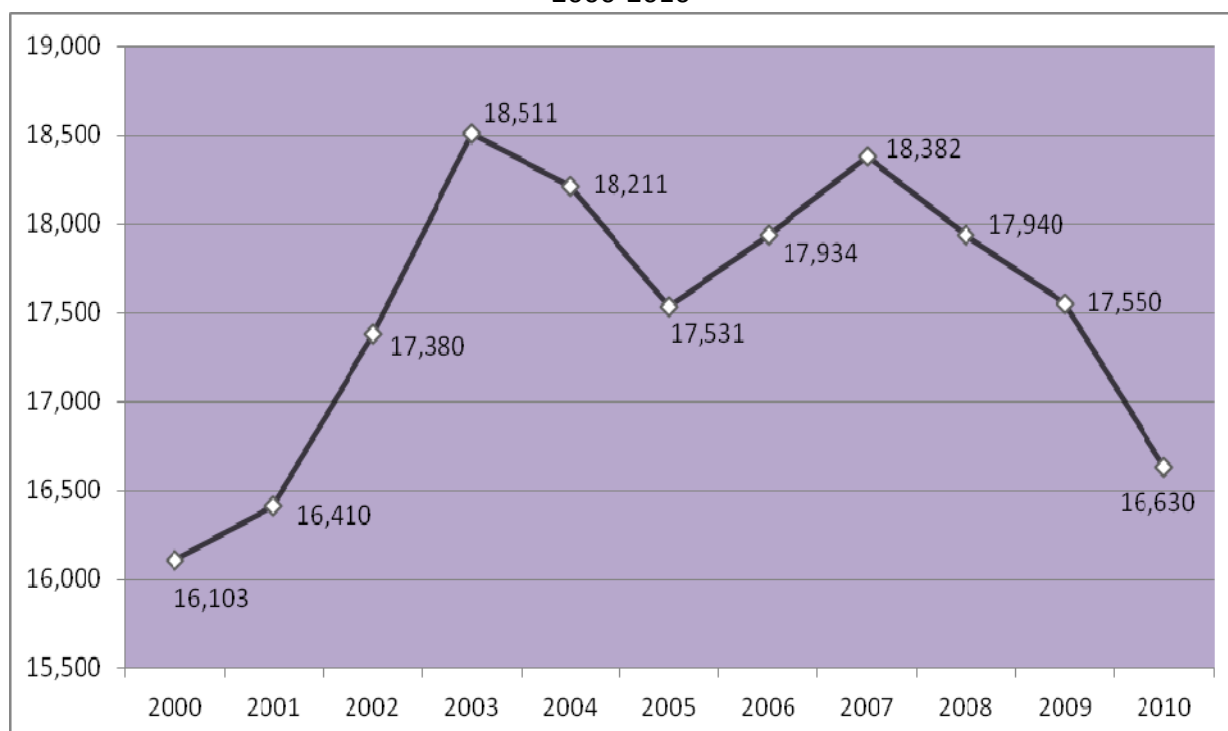
This supplementary report sets out the Committee's analysis of the 2010 statistics. Further statistics in tabular form are available to view online at Statistics New Zealand website:

<http://www.stats.govt.nz>

1. Induced Abortions, Rates and Ratios

Graph 1.1

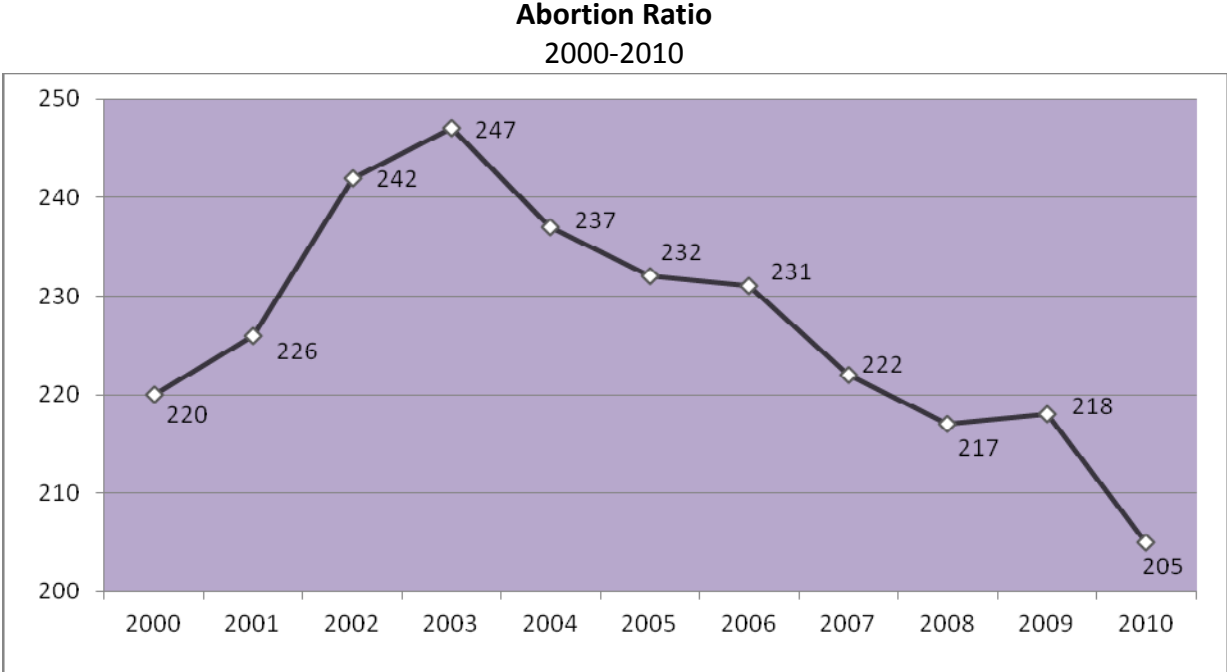
**Number of Induced Abortions
2000-2010**



The Committee is encouraged that abortion numbers are continuing to drop each year in addition to the total abortion ratio and rate showing a downward trend (see graphs 1.2 and 1.3 on page 4).

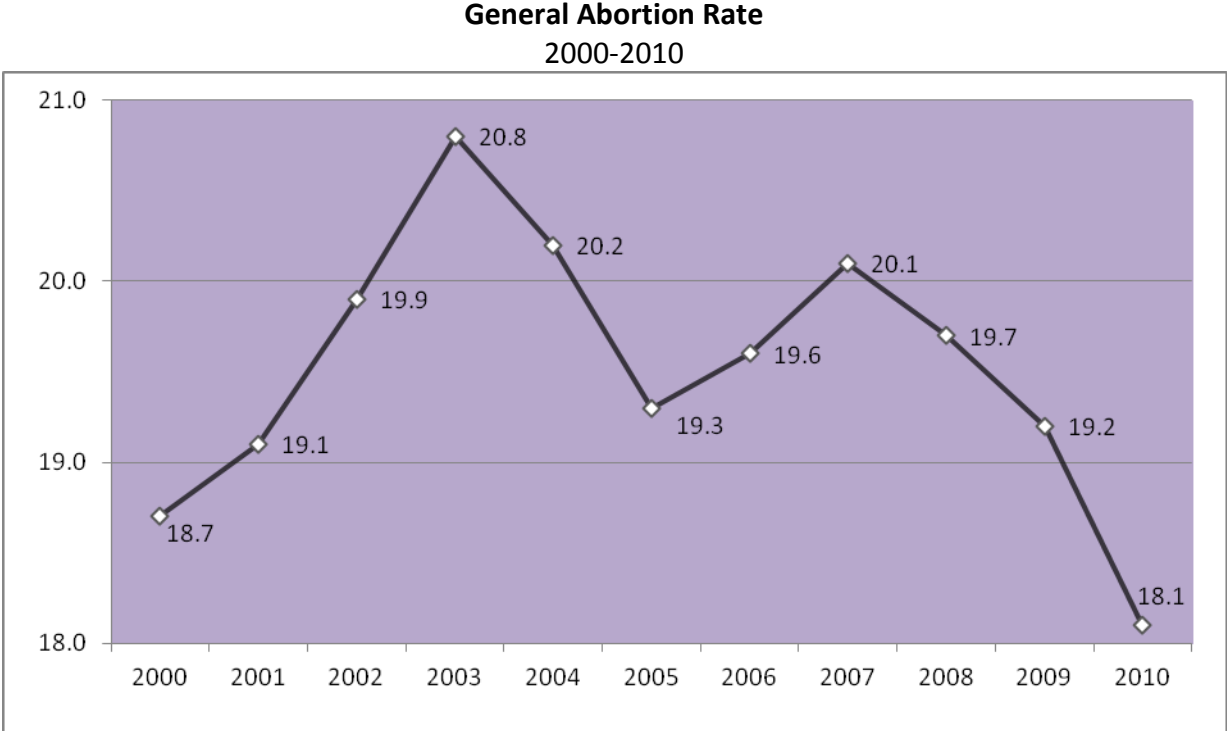
The current ratio is the lowest recorded since 1994.

Graph 1.2



The abortion ratio is the number of abortions per 1,000 known pregnancies. Known pregnancies include live births, stillbirths and induced abortions combined, but does not include miscarriages.

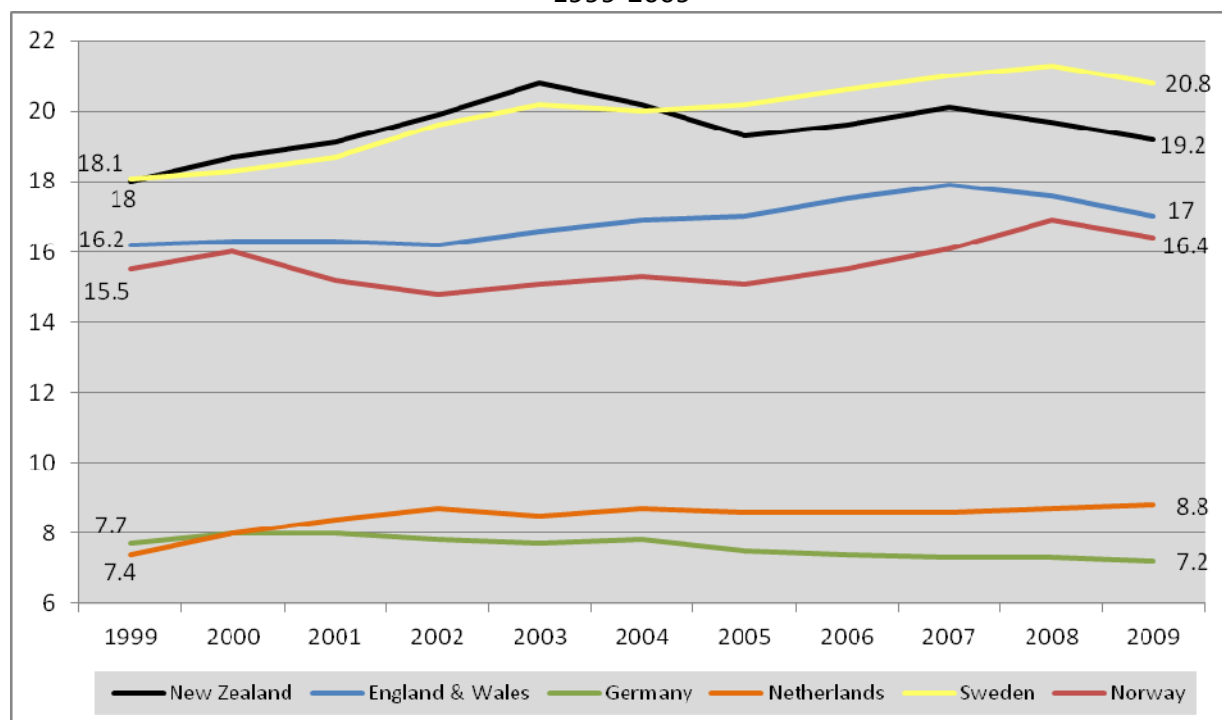
Graph 1.3



The general abortion rate is the number of abortions per 1,000 of the mean estimated population of women aged 15-44 years.

Graph 1.4

General Abortion Rates in Selected Countries
1999-2009



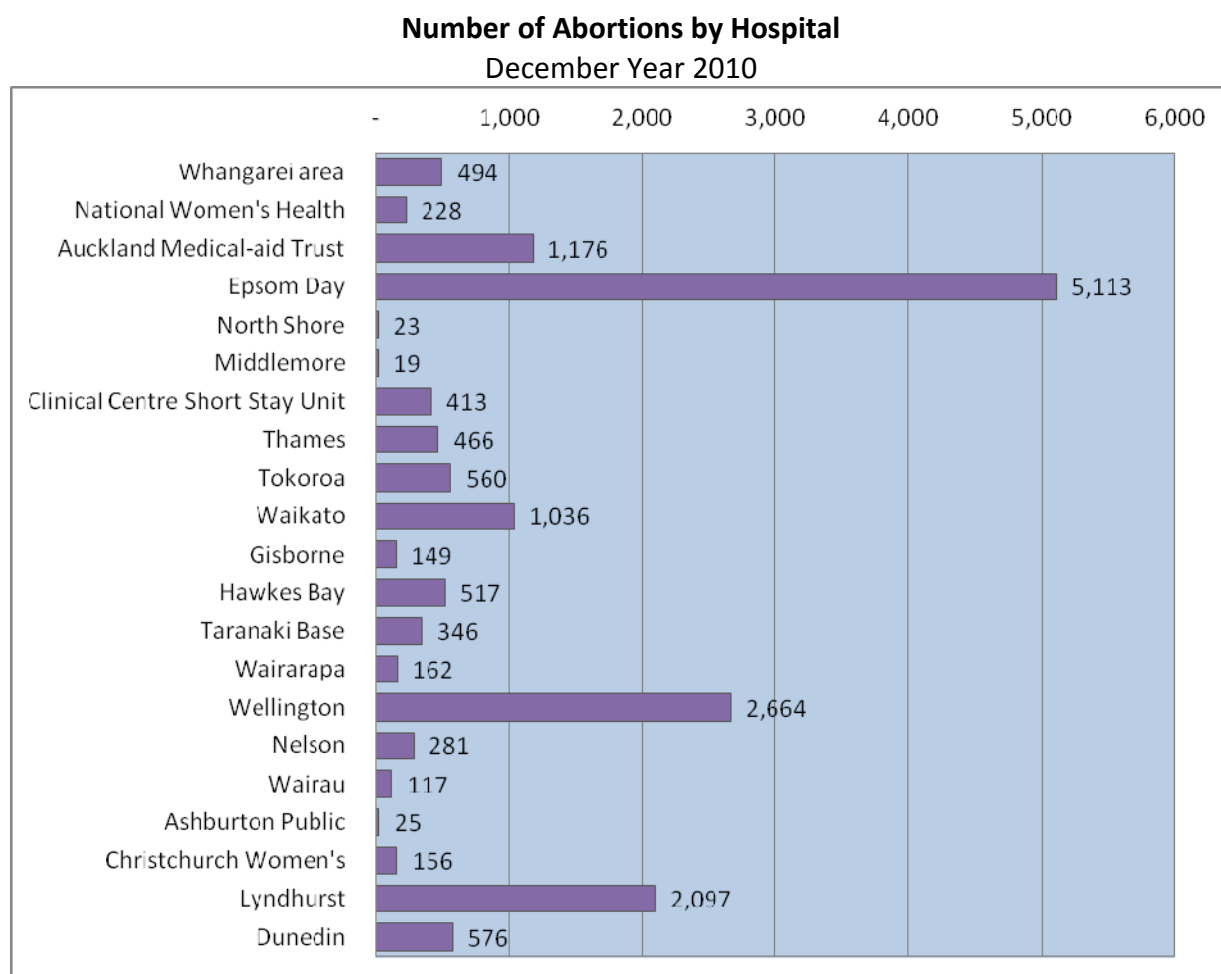
The general abortion rate is the number of abortions per 1,000 of the mean estimated population of women aged 15-44 years.

International data should be interpreted with care as accuracy varies from country to country depending on reporting requirements. Data for 2010 is not available.

Note: Figures for Germany have been revised; the following years have been updated - 2003, 2006 and 2008

2. Hospital and Residence

Graph 2.1



Five other hospitals performed a total of 25 abortions:

Palmerston North
 Surgery on Shakespeare
 Timaru
 Rotorua
 Brightside

Graph 2.2

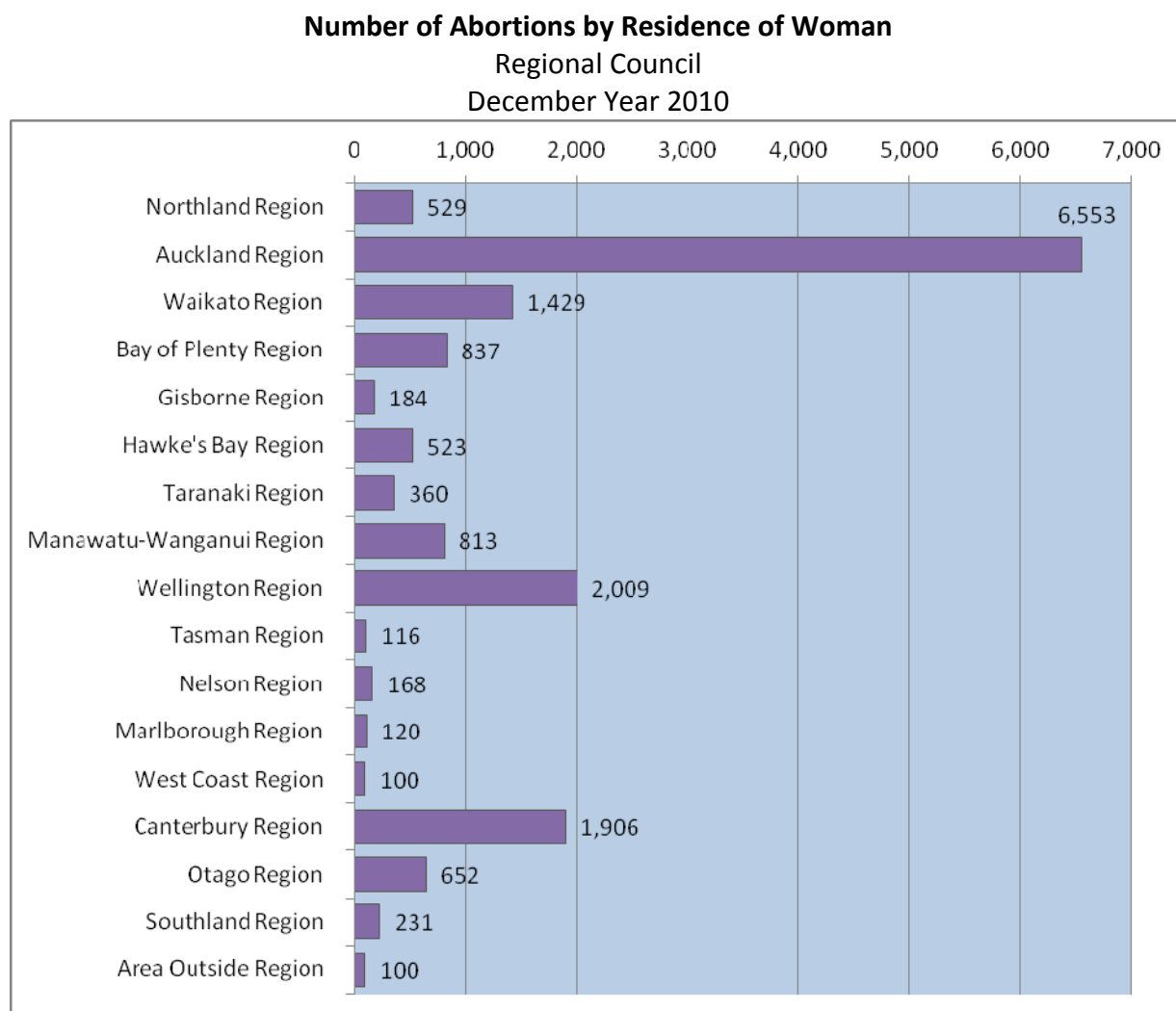


Table 2.3

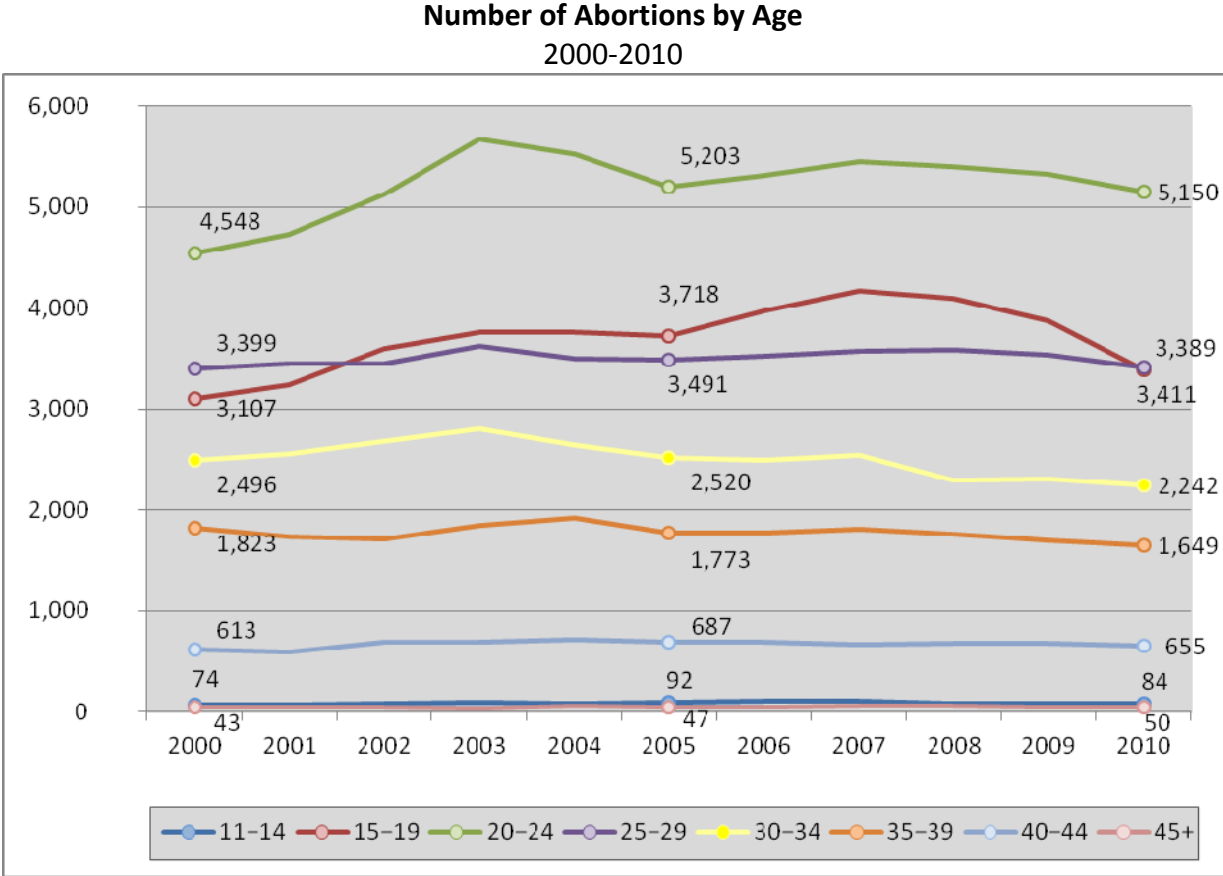
Induced Abortions by Residential Status of Woman
December Year 2010

Residential Status ⁽¹⁾	Number
New Zealand Resident	15,125
Non-resident	1,194
Not Stated	311
Total	16,630

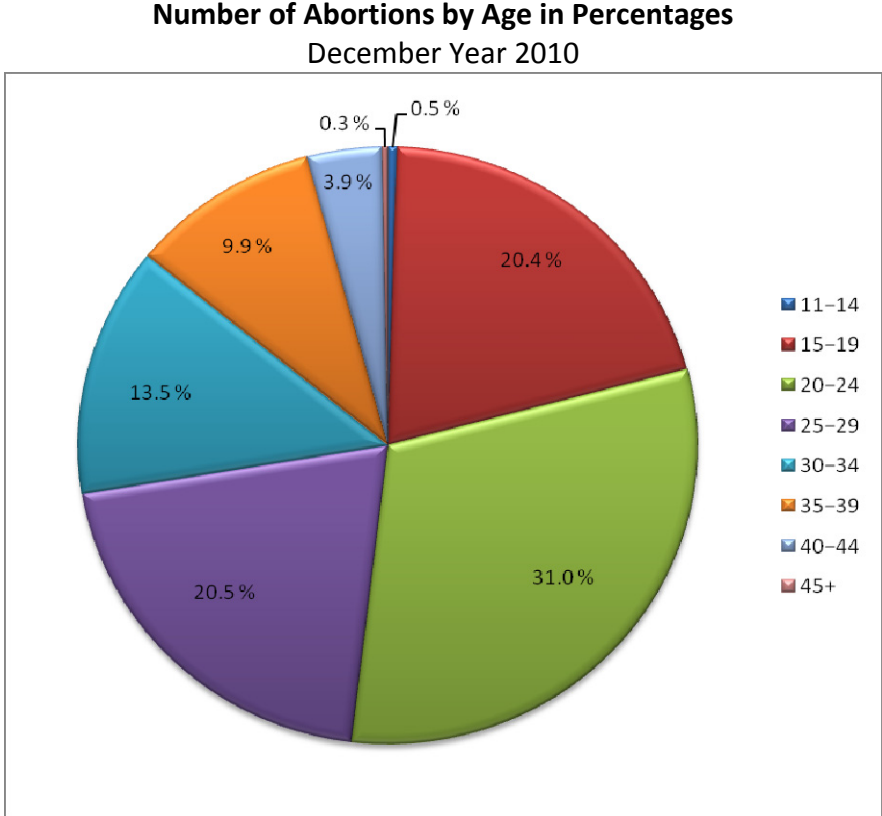
(1) Residential status is not the same as place of residence.

3. Age of Woman

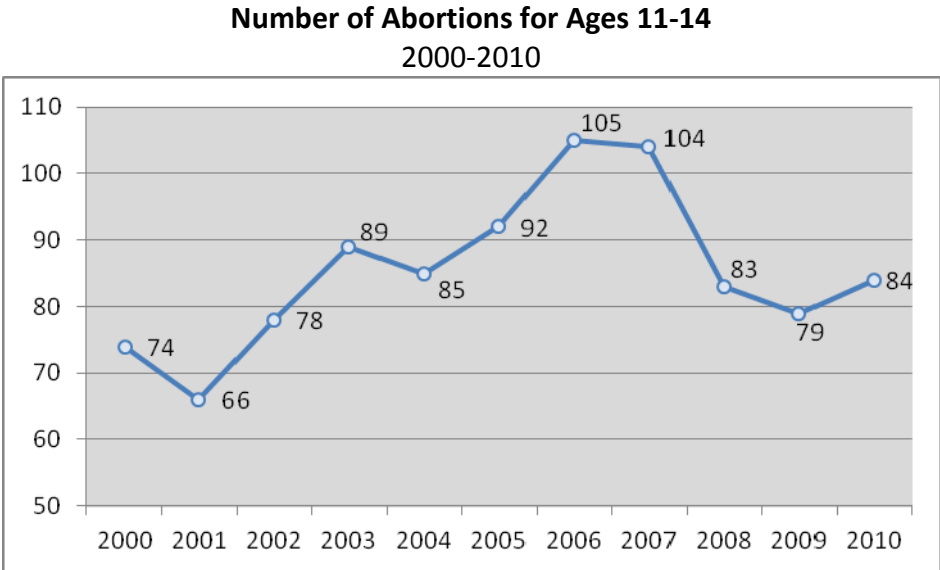
Graph 3.1



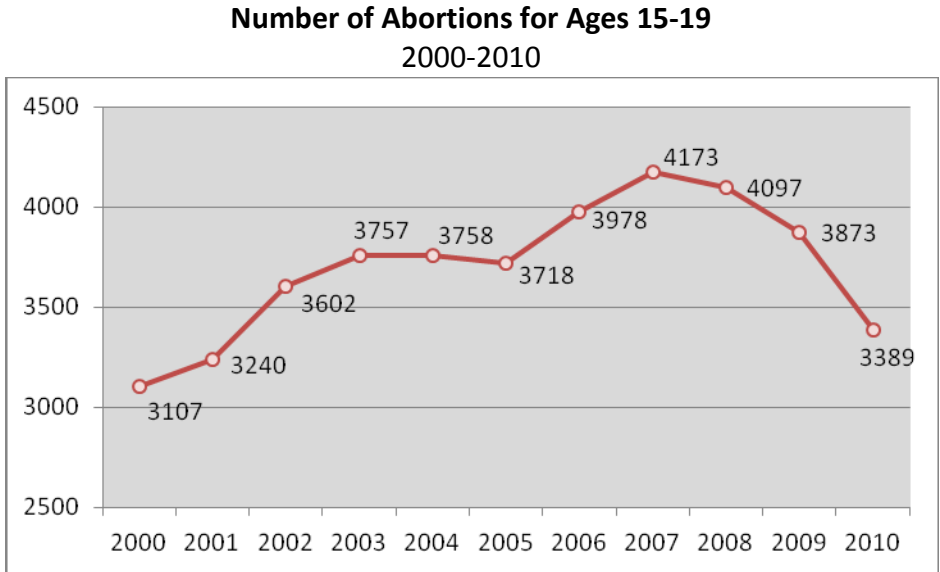
Graph 3.2



Graph 3.3



Graph 3.4



4. Previous Live Births

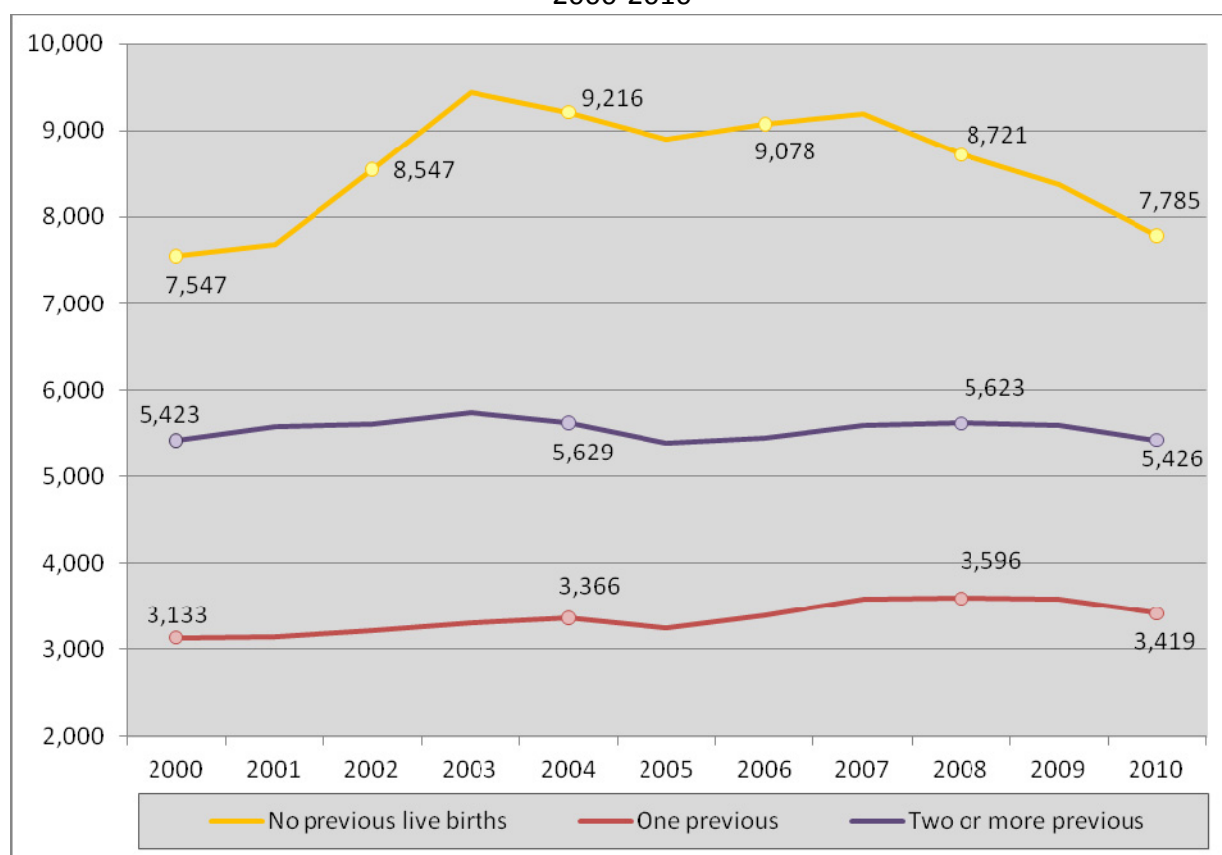
Table 4.1

Induced Abortions by Age and Previous Live Births
December Year 2010

Age (years)	Previous Live Births									
	Total	0	1	2	3	4	5	6	7 or More	6 or More
	Number									
All Ages	16,630	7,785	3,419	3,097	1,348	582	243	91	65	156
Under 15	84	83	1	-	-	-	-	-	-	-
15-19	3,389	2,836	460	88	5	-	-	-	-	-
20-24	5,150	2,830	1,357	707	197	46	12	1	-	1
25-29	3,411	1,264	793	747	372	148	59	17	11	28
30-34	2,242	484	408	681	354	185	81	26	23	49
35-39	1,649	212	286	610	290	131	66	36	18	54
40-44	655	69	111	245	122	65	22	9	12	21
45 and over	50	7	3	19	8	7	3	2	1	3

Graph 4.2

Number of Abortions by Previous Live Births
2000-2010



5. Previous Induced Abortions

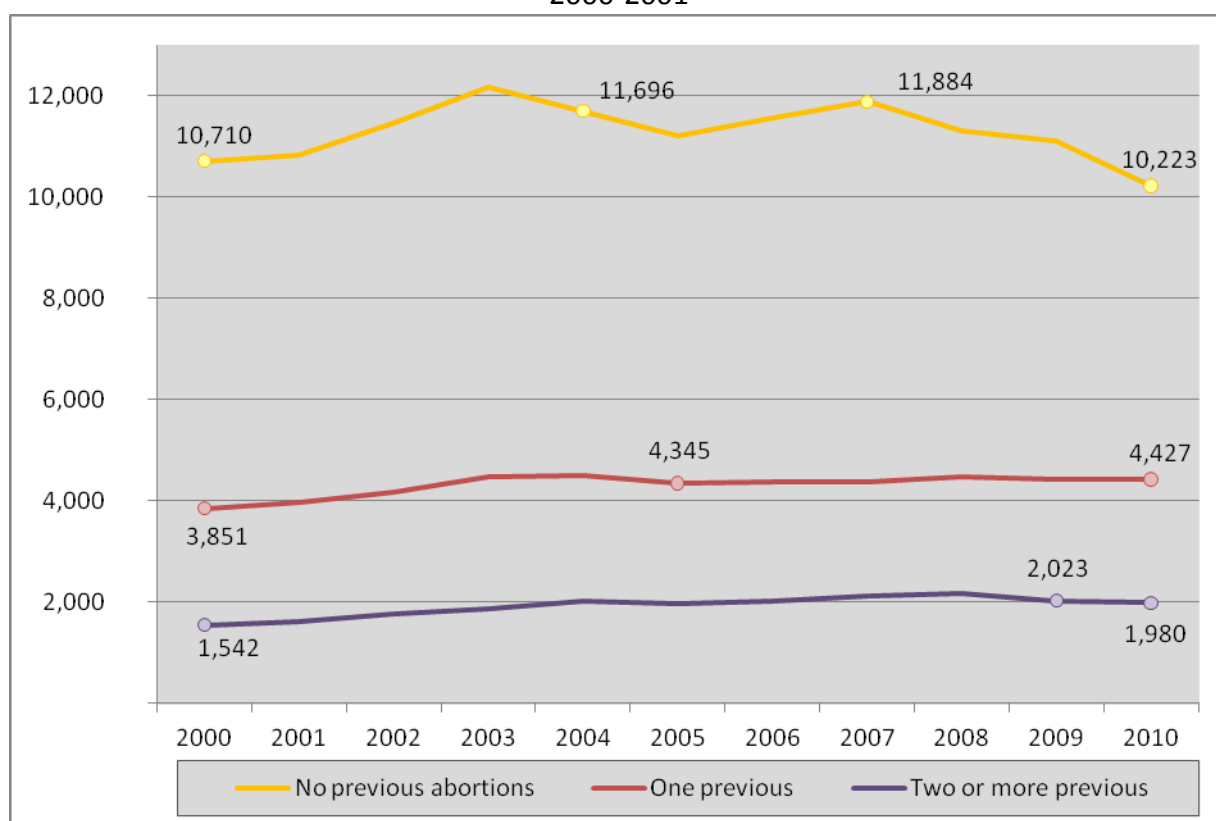
Table 5.1

Induced Abortions by Age and Previous Induced Abortions
December Year 2010

Age (years)	Previous Abortions							
	Total	0	1	2	3	4	5	6 or More
Number								
All Ages	16,630	10,223	4,427	1,332	446	136	47	19
Under 15	84	84	-	-	-	-	-	-
15-19	3,389	2,812	522	51	4	-	-	-
20-24	5,150	3,267	1,417	358	87	15	4	2
25-29	3,411	1,789	1,036	379	144	42	16	5
30-34	2,242	1,104	688	279	108	45	13	5
35-39	1,649	786	544	195	81	27	10	6
40-44	655	352	207	66	19	6	4	1
45 and Over	50	29	13	4	3	1	-	-

Graph 5.2

Number of Abortions by Previous Induced Abortions
2000-2001



REPEAT ABORTIONS

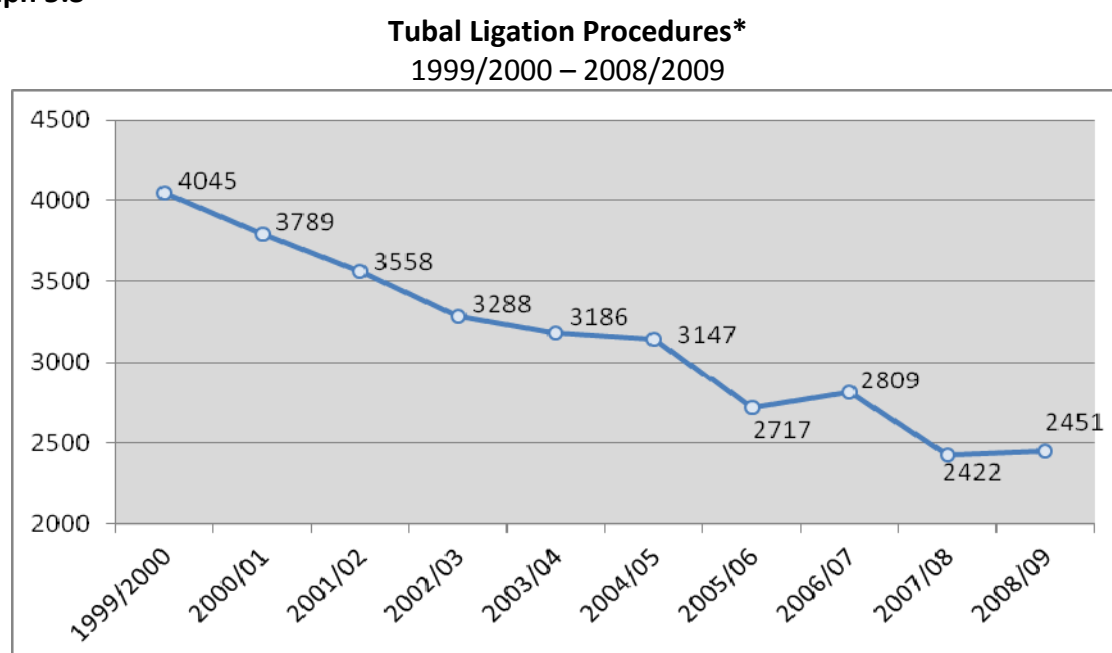
The Committee is concerned about the number of repeat abortions and has been considering the barriers to effective long term contraception or sterilisation being available to women who have multiple abortions.

Tubal Ligation

We have been made aware of the difficulty for women obtaining publically funded tubal ligation procedures both in meeting strict criteria set by individual District Health Boards (DHB) and the timeliness of receiving the procedure. The strict criteria set may need to be reviewed; particularly considering newer methods of tubal ablation are being adopted by some DHBs, which involve a much simpler day procedure. While some DHBs have already adopted mechanisms to prioritise women who are deemed at risk, this should be universally adopted.

Information provided by the Ministry of Health shows a marked decline in publically funded tubal ligation procedures over the previous ten years (graph 5.3).

Graph 5.3



*Figures provided by the Ministry of Health

Note: These figures are for publically funded procedures only and do not include privately funded procedures

Long Term Contraceptive Devices

There is a demographic of women who have surgical risk factors that are a contraindication to tubal ligation. These women would benefit from the provision of suitable intra-uterine contraceptive devices but, because of the very narrow criteria for these being prescribed free of charge, are not receiving them.

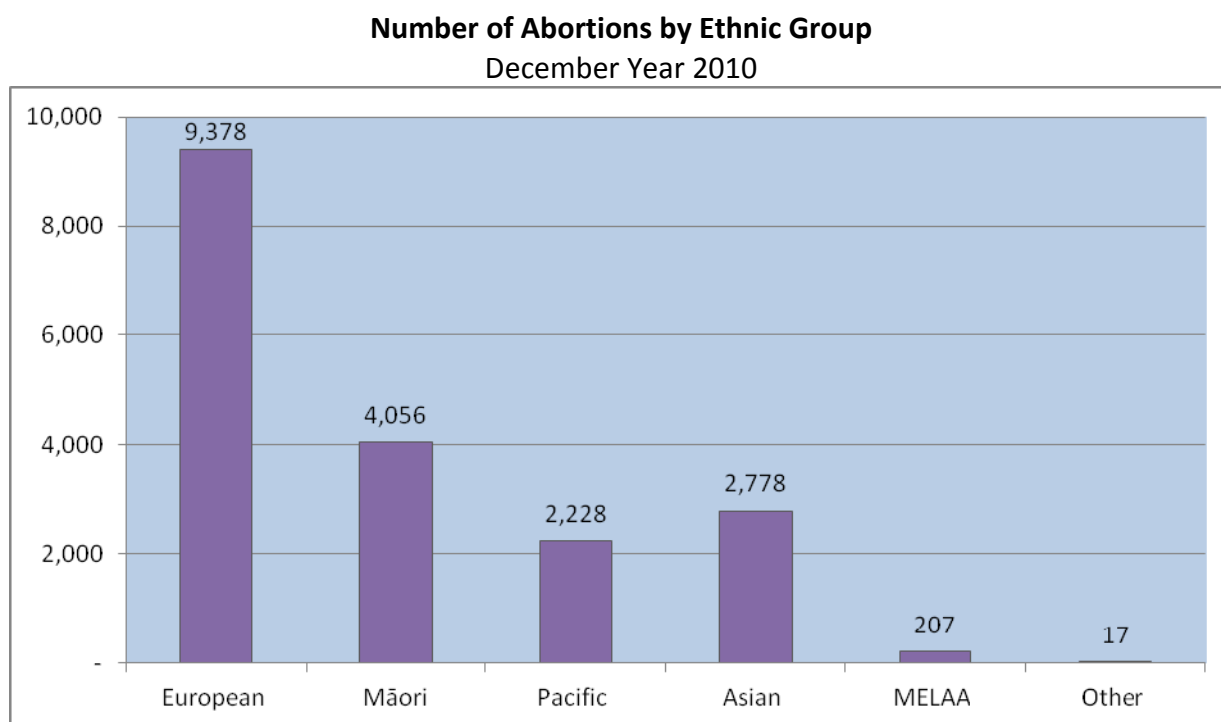
While the provision of publically funded subcutaneous long term contraceptive devices has led to widespread use in New Zealand, they are not without side effects and can be difficult to remove. In discussion with those providing these contraceptive services, there is the

opinion that the free provision of more suitable intra-uterine devices would be more effective for some women.

Despite the fact that there is a higher failure rate when intra-uterine devices are inserted at the time of an abortion (as opposed to at a later date), the Committee prefers this option due to fewer women returning to have long term contraceptive devices inserted.

6. Ethnic Group

Graph 6.1

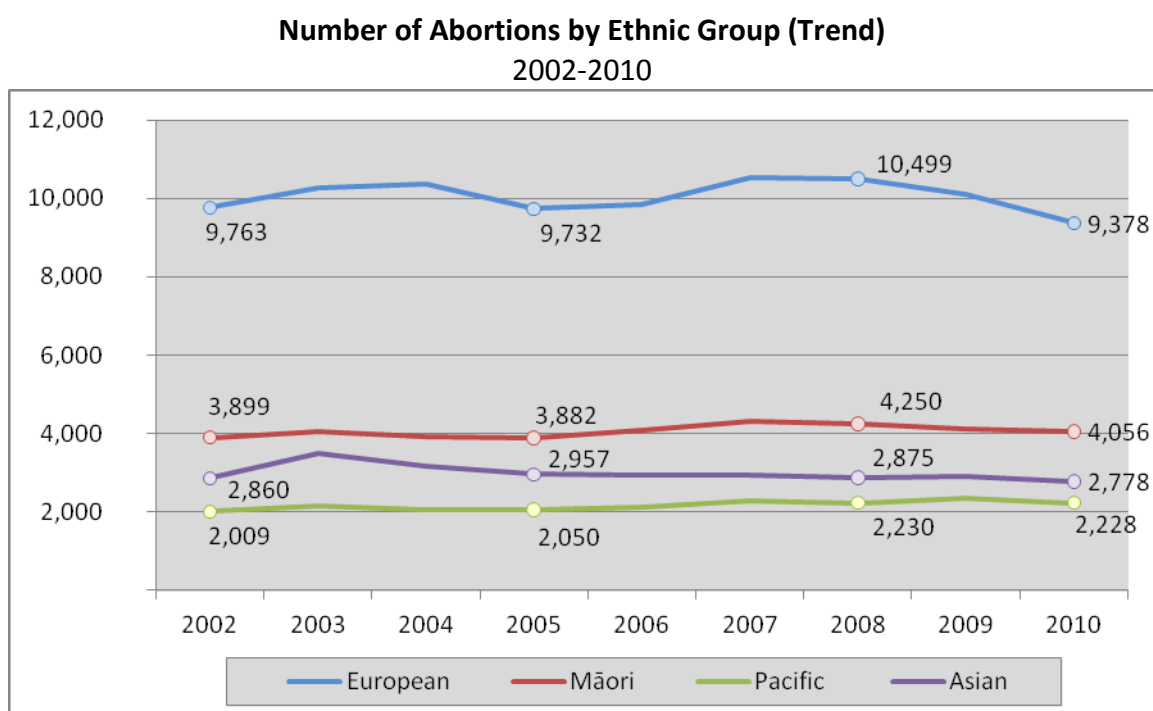


Each abortion has been included in every ethnic group specified. For this reason, some abortions are counted more than once.

Note:

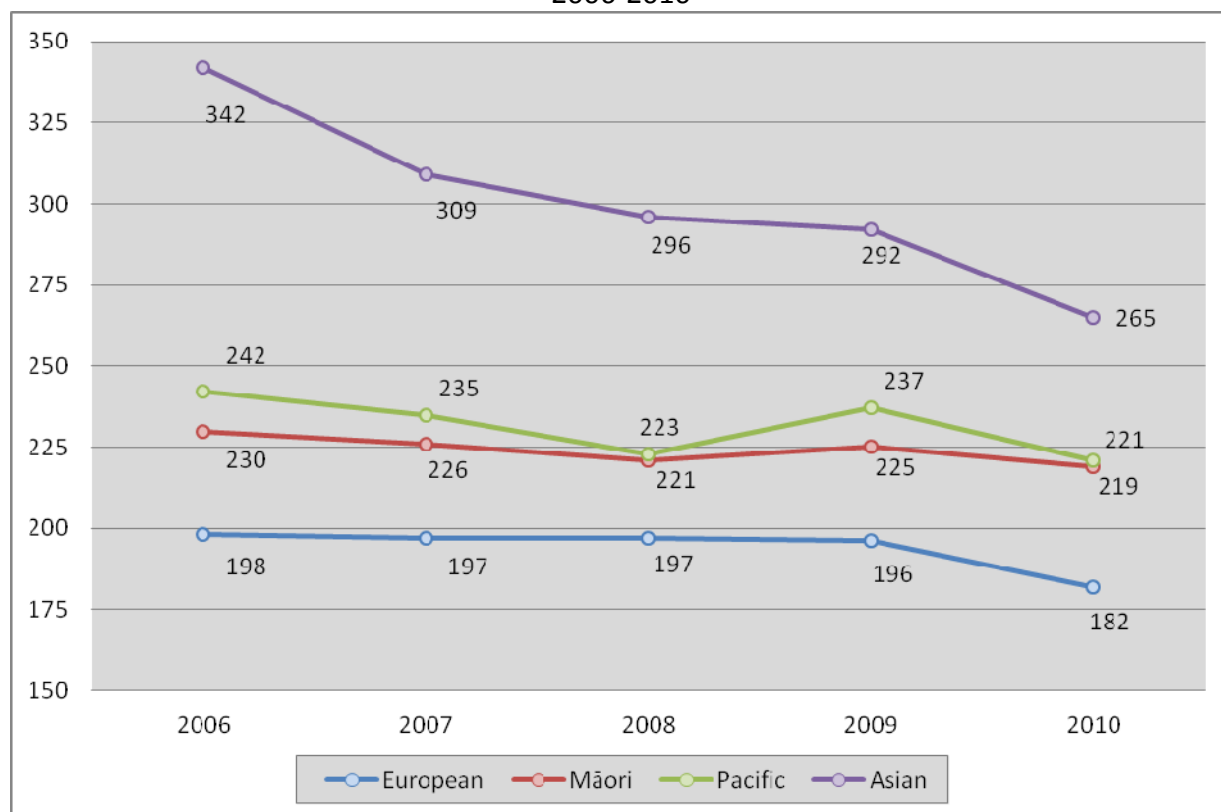
- (a) MELAA = Middle Eastern, Latin American and African
- (b) Other includes New Zealanders.

Graph 6.2



Graph 6.3

Induced Abortions by Ethnicity Ratio 2006-2010



Each abortion has been included in every ethnic group specified. For this reason, some abortions are counted more than once.

Ratio: Induced abortions per 1,000 known pregnancies including live births, stillbirths and abortions combined, but do not include miscarriages.

The Committee notes that the ratios across all major ethnicities have been dropping.

7. Duration of Pregnancy

Table 7.1

Induced Abortion by Age and Duration of Pregnancy
December Year 2010

Age Group	Total	Under 8 weeks	8-12 weeks	13-16 weeks	17-20 weeks	Over 20 weeks
Totals	16,630	2,168	13,110	1,039	248	65
Under 20	3,473	328	2,820	262	60	3
20-24	5,150	656	4,092	321	63	18
25-29	3,411	495	2,687	175	42	12
30-34	2,242	319	1,766	116	30	11
35-39	1,649	262	1,225	110	36	16
40-44	655	101	483	53	14	4
45 +	50	7	37	2	3	1

Table 7.2

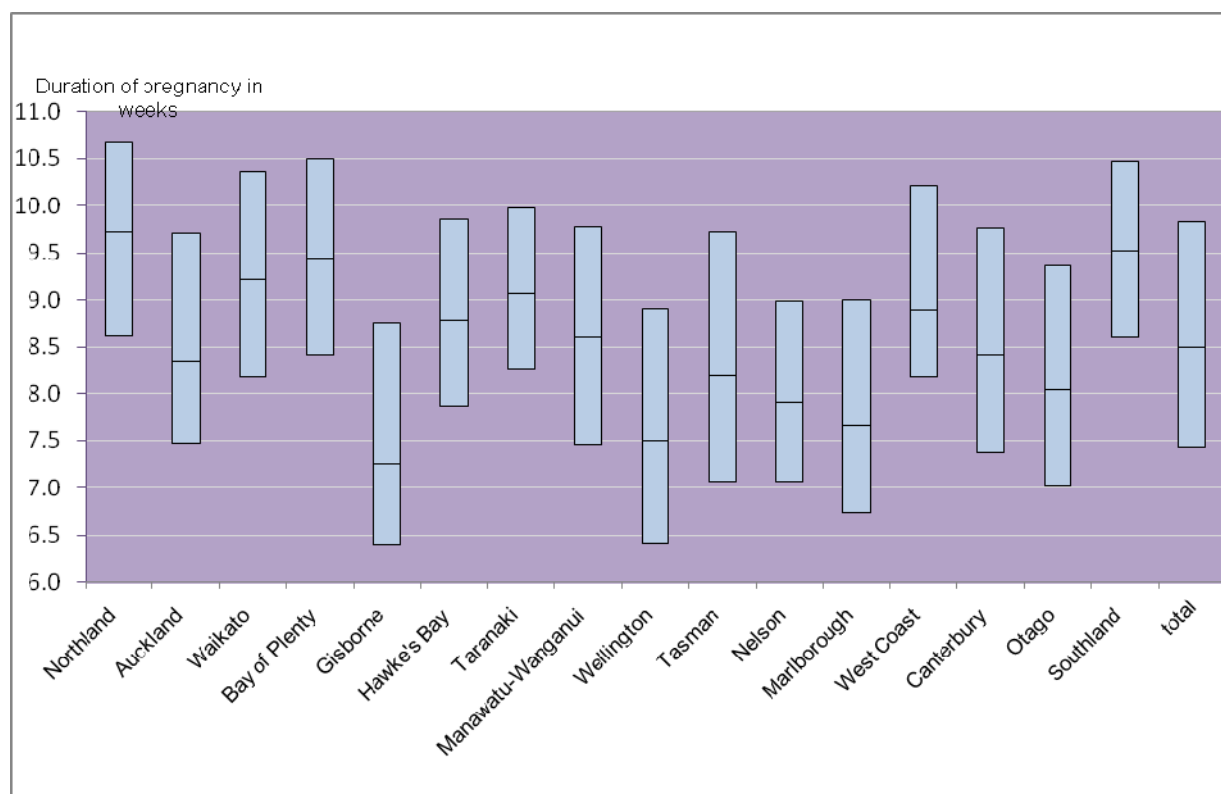
Induced Abortion by Duration of Pregnancy
2000-2010

December year	Duration of pregnancy (weeks)								Total abortions
	Under 8	8	9	10	11	12	13	14+	
Number									
2000	854	2,047	3,135	3,564	2,627	2,062	985	829	16,103
2001	925	1,790	2,969	3,622	2,721	2,270	1,227	886	16,410
2002	1,129	1,751	2,773	3,820	3,019	2,633	1,300	955	17,380
2003	1,281	1,824	2,710	3,882	3,456	2,903	1,494	961	18,511
2004	1,263	1,835	3,505	3,933	3,007	2,613	1,164	891	18,211
2005	1,271	1,782	2,928	3,620	3,011	2,640	1,350	929	17,531
2006	1,526	1,843	3,012	3,729	2,990	2,634	1,259	941	17,934
2007	1,478	2,413	3,558	3,671	3,131	2,631	478	1,022	18,382
2008	1,687	2,875	3,743	3,535	2,655	2,026	438	981	17,940
2009	1,941	3,294	3,580	3,149	2,412	1,768	408	998	17,550
2010	2,168	3,836	3,316	2,601	1,993	1,364	470	882	16,630
Percent									
2000	5.3	12.7	19.5	22.1	16.3	12.8	6.1	5.1	100.0
2001	5.6	10.9	18.1	22.1	16.6	13.8	7.5	5.4	100.0
2002	6.5	10.1	16.0	22.0	17.4	15.1	7.5	5.5	100.0
2003	6.9	9.9	14.6	21.0	18.7	15.7	8.1	5.2	100.0
2004	6.9	10.1	19.2	21.6	16.5	14.3	6.4	4.9	100.0
2005	7.3	10.2	16.7	20.6	17.2	15.1	7.7	5.3	100.0
2006	8.5	10.3	16.8	20.8	16.7	14.7	7.0	5.2	100.0
2007	8.0	13.1	19.4	20.0	17.0	14.3	2.6	5.6	100.0
2008	9.4	16.0	20.9	19.7	14.8	11.3	2.4	5.5	100.0
2009	11.1	18.8	20.4	17.9	13.7	10.1	2.3	5.7	100.0
2010	13.0	23.1	19.9	15.6	12.0	8.2	2.8	5.3	100.0

Note: Percentages may not sum to stated totals due to rounding.

Table 7.3

First Trimester Abortions (1) by Duration of Pregnancy 2010
25th, 50th, and 75th percentiles by regional council



(1) Induced abortions performed before the thirteenth week of pregnancy.

Note: Gestation refers to the Xth week not complete weeks. For example 7 weeks and 5 days is recorded as the 8th week.

The above 'box-plot' graph shows the median duration of pregnancy (indicated by the line in the middle of each box) for first trimester abortions in each region (by regional council areas).

The top of each box is the 75th percentile (three-quarters of first trimester pregnancies were terminated within this number of weeks) and the bottom of each box represents the 25th percentile (one-quarter of first trimester pregnancies were terminated within this number of weeks).

Some districts with the least favourable results in terms of timeliness represented those with a paucity of certifying consultants such as Northland, Southland, West Coast and the Bay of Plenty. District Health Boards in these areas need to consider how their 1st trimester services can be improved.

Other centres with equal challenges such as Gisborne, with women having to travel long distances within the area, have achieved commendable results.

Two centres with larger populations, namely Waikato and Bay of Plenty, have less than desirable statistics.

8. Grounds for Abortion

Table 8.1

Induced Abortion by Grounds for Abortion
December Year 2010

Grounds for Abortion	Number	Percent
Total	16,630	100.0
Danger to Life	43	0.3
Danger to Physical Health	17	0.1
Danger to Mental Health	16,295	98.0
Danger to Life and Physical Health	4	0.0
Danger to Life and Mental Health	1	0.0
Mental and Physical Health Danger	46	0.3
Handicapped Child and Mental Danger	132	0.8
Handicapped Child, Physical and Mental Danger	7	0.0
Handicapped Child and Other	2	0.0
Seriously Handicapped Child	65	0.4
Criminal Offence and Danger to Mental Health	13	0.1
Criminal Offence and Other	1	0.0
Not Stated	2	0.0
Other	2	0.0

9. Procedure

Table 9.1

Induced Abortions by Procedure
December Year 2010

Procedure	Number	Percent
Total	16,630	100.0
Prostaglandin and suction curettage	13,497	81.2
Mifegyne and prostaglandin	1,094	6.6
Prostaglandin, dilation, curettage and evacuation	922	5.5
Prostaglandin, suction curettage, dilation, currettage, and evacuation	345	2.1
Prostaglandin, suction curettage, dilation and evacuation	270	1.6
Prostaglandin, suction curettage, dilation and curettage	225	1.4
Suction curettage	105	0.6
Prostaglandin, mifegyne, suction curettage, dilation, curettage, and evacuation	79	0.5
Mifegyne	31	0.2
Prostaglandin, mifegyne, suction curettage, dilation and curettage	10	0.1
Prostaglandin, suction curettage and mifegyne	10	0.1
Prostaglandin, dilation and evacuation	7	0.0
Dilation and curettage	5	0.0
Prostaglandin	5	0.0
Suction curettage, mifegyne and prostaglandin	4	0.0
Mifegyne and other medical	3	0.0
Mifegyne, prostaglandin and other medical	3	0.0
Prostaglandin, mifegyne, suction curettage, dilation, and evacuation	3	0.0
Suction curettage, dilation and curettage	3	0.0
Other medical	2	0.0
Dilation and evacuation	1	0.0
Other surgical	1	0.0
Other surgical and medical combination	1	0.0
Prostaglandin and other medical	1	0.0
Prostaglandin, mifegyne, suction curettage, dilation and evacuation	1	0.0
Prostaglandin, suction curettage and other surgical	1	0.0
Suction curettage, dilation and evacuation	1	0.0
Total medical only abortions	1,139	6.8
Total surgical abortions	15,491	93.2

The Committee is pleased that the number of complications remains low but with the increased use of the electronic referral system, we hope that the accuracy of this data will improve in the coming years.

Contraception

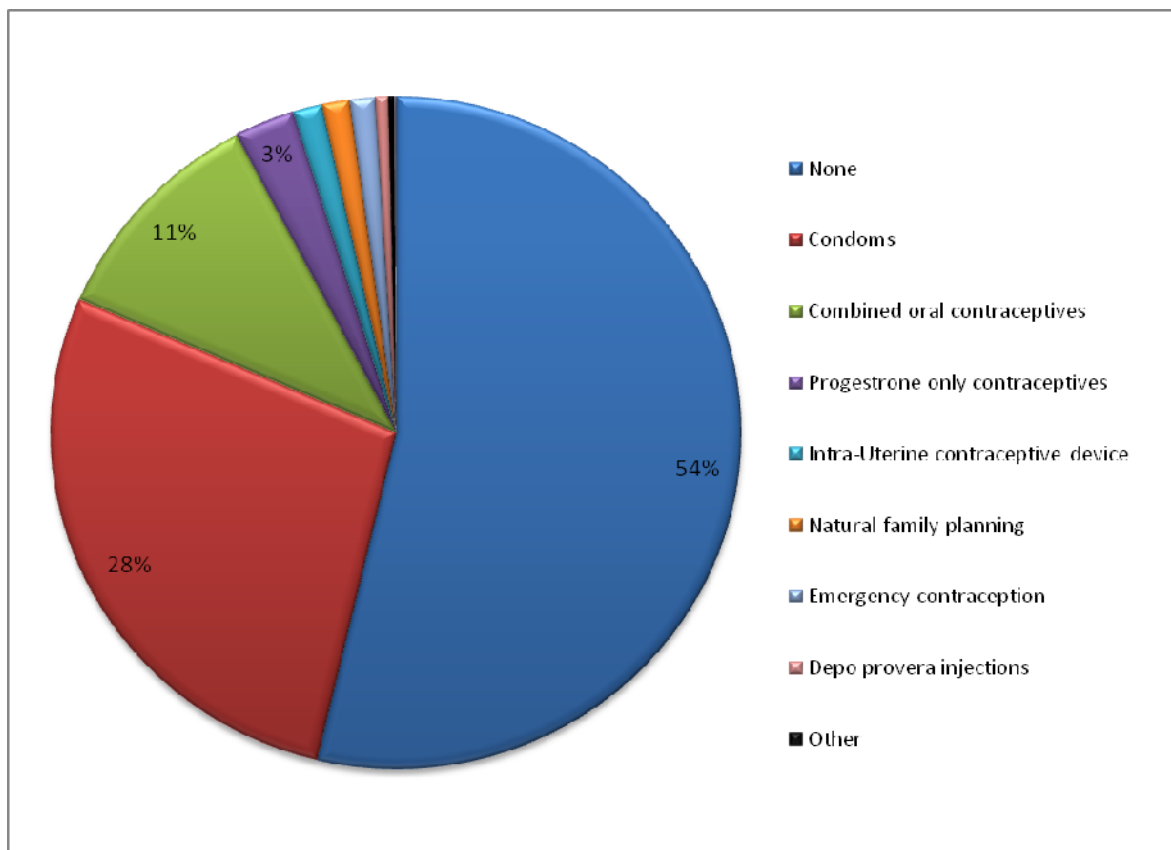
Table 10.1

Induced Abortions by Contraception Used December Year 2010

Contraception Used	Number	Percent
Total	16,630	100.0
None	8,928	53.7
Condoms	4,627	27.8
Combined oral contraceptives	1,802	10.8
Progestrone only contraceptives	471	2.8
Intra-Uterine contraceptive device	230	1.4
Natural family planning	215	1.3
Emergency contraception	199	1.2
Depo provera injections	104	0.6
Other	42	0.3
Diaphragm	12	0.1

Graph 10.2

Percentage of Abortions by Contraception Used December Year 2010



It is a concern that over 50% of abortions performed are recorded as using no contraception.